

MCD-5030A X-Ray Baggage Scanner

Shenzhen MCD Electronics Co.,Ltd

📍 2F, NO.1 BLDG, Chunhu Industrial Zone, E 'gongling Village, Pinghu Town, Longgang District, Shenzhen City, P.R.C.

🌐 Website: www.gdmcd.com ✉ sales@gdmcd.com

📞 WhatsApp/ WeChat: +86 19128381863

MCD-5030A X-Ray Baggage Scanner



Single Energy Airport Security X Ray Machine and Baggage & Luggage Scanner MCD-5030A with X-ray scanner detecting. More strong penetration. Which show object interior metal structure by LCD screen. Especially designed for tourist spot, gymnasium, conference centre, exhibition, baggage deposit, shopping mall, hotel and other important locations.

1. Full screen imaging, super large image, clear layer. Can work continuously to save 10,000 patterns.
2. The equipment X-ray leakage reaches green environmental protection level, no radiation
3. All-day working state, continuous cooling without standby
4. Energy saving: start running when there is luggage on the machine, and stop automatically when there is no running
5. The image can be enlarged by 32 times, and the magnification can be displayed energetically
6. Real-time display of the amount of X-ray emission time

Technical Specifications

Product Name	X-ray inspection machine
Model Number	MCD-5030A

General specification

Tunnel Size	500(W) × 300(H)mm
Conveyor Speed	0.2m/s
Conveyor Max Load	150kg(Evenlydistributed)
Dose per Inspection	less than 1.0 μGy/h
Wire Resolution	32AWGΦ0.202mm
Spatial Resolution	Level: dia1.0mm Vertical: dia1.3mm
Penetration	14mm steel
Film Safety	Guarantee ISO1600 Film
X-ray Leakage	less than 1 μGy/h (at a distance of 5cm from frame house)
Monitor	19 inch
Operation temperature/Humidity	0°C-45°C/20%-95%(non-condensing)
Storage Temperature/Humidity	-20°C-60°C/20%-95%(non-condensing)
Operation Power	220VAC(±10%)50±3Hz
Power Consumption	less than 0.5KW

Image system

X-ray sensor	L-Shaped Photo diode Array (mono energetic) , 16bit Deep
Monitor	High-Resolution Color, LCD Accord, 19 inch
Image Processing	Edge enhancement, image strengthening, image lightening, reducing darkening,image returning, image retrieval
Image grey level	4096
Image max resolution	1024*1280 pixel
Image processing	24bit for processing real-time
Image storage	Storage 10000 pictures in real-time

X-ray generator

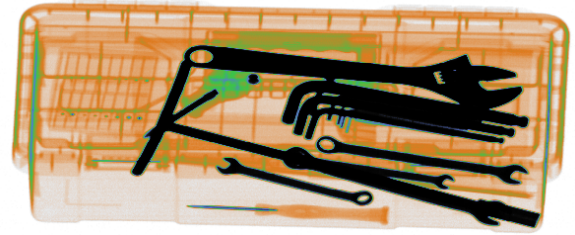
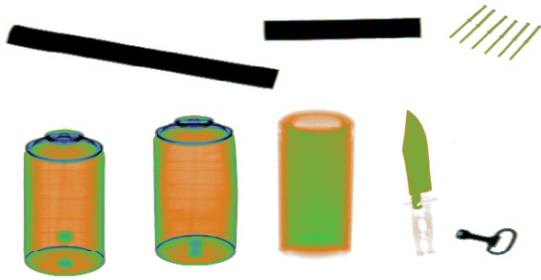
Generator direction	Upward
Generator angle	80 degree
Anode voltage	80KV
Anode power	0.6mA
Cooling / Duty Cycle	Oil Cooling /100%

Package

Package Size	
Dimension	182*94*141cm
CBM	2.42CBM
Net Weight	190KG

Usage Areas

- ✓ Factories
- ✓ Logistics Areas
- ✓ Hotels
- ✓ Fair Entries
- ✓ Prisons
- ✓ Academies
- ✓ Activity Areas
- ✓ Smart Buildings
- ✓ Business centers
- ✓ Gyms
- ✓ Stadiums
- ✓ Dams
- ✓ Dining Halls
- ✓ Public institutions
- ✓ Residences
- ✓ Shopping malls
- ✓ Airports
- ✓ Police Stations
- ✓ Military Areas
- ✓ Public Transport Stations



ORGANIC

Atomic numbers from 1 to 10 are called organic compounds and are shown in orange. Examples of organic compounds; paper, textiles, wood and water.

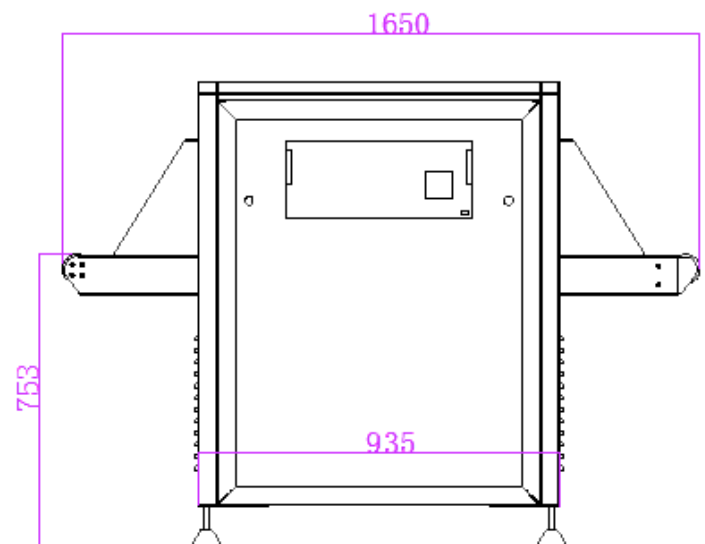
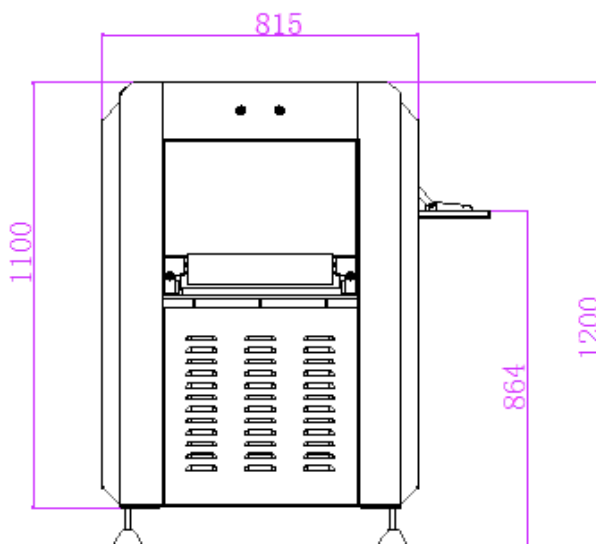
NORGANIC

Those with an atomic number greater than 18 are referred to as inorganic and indicated with blue. Examples of inorganic substances are titanium, chromium, iron, steel, tin, lead, copper, silver, gold.

MIXTURE

An atomic number between 10 and 18 is called a mixture and is shown in green.

Technical Drawing



MCD-5030A Technical Drawing